



MINI CRAWLER CRANE

WWW.MASSHIRE.COM.AU



MASSHIRE

OUR CAPACITY IS UNLIMITED

Our capacity is unlimited



What we do

Mass Hire specialises in providing superior lifting solutions to construction sites throughout Australia. As part of Mass Group, we are known for our exceptionally high standards when it comes to using the latest lifting technology, ensuring a seamless solution for client projects every step of the way.

Having a wealth of combined experience, our team of experts understand better than anyone the importance of using a reliable fleet of machinery to get the job done. With the ability to supply mini-cranes that suit projects of all sizes, we are proud to be a trusted name throughout Australia's building and construction sector.

WHY CHOOSE OUR MINI CRANES?



**LIMITED
ACCESS**



SAFETY



EFFICIENCY



PRECISION



ADAPTABILITY



VERSATILITY

MC174C

MINI CRAWLER CRANE

MAX. LIFTING HEIGHT	5.5 0m
MAX. WORKING RADIUS	5.17m X 0.22t
CRANE CAPACITY	1.72t X 1.0m



AUXILIARY OPTIONS

SEARCHER HOOK
Capacity: 300kg



PADDLE LEVER RADIO
REMOTE CONTROL



SINGLE FALL HOOK



RATED TOTAL LOAD CHART (4 FALLS)

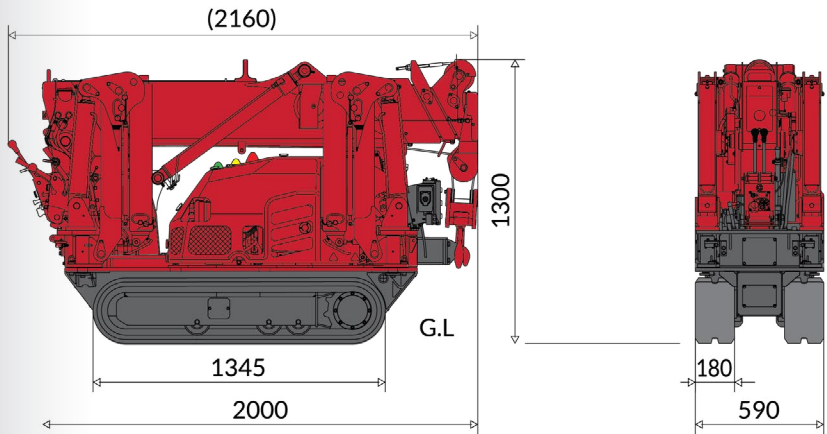
OUTRIGGER EXTENDED TO MAXIMUM								OUTRIGGER EXTENDED TO OTHER THAN MAXIMUM							
1.83m Boom		2.97m Boom		4.21m Boom		5.45m Boom		1.83m Boom		2.97m Boom		4.21m Boom		5.45m Boom	
Working radius(m)	Rated total load(Kg)	Working radius(m)	Rated total load(Kg)	Working radius(m)	Rated total load(Kg)	Working radius(m)	Rated total load(Kg)	Working radius(m)	Rated total load(Kg)	Working radius(m)	Rated total load(Kg)	Working radius(m)	Rated total load(Kg)	Working radius(m)	Rated total load(Kg)
1.0 or less	1720	1.0 or less	1720	1.3 or less	1320	1.7 or less	770	1.0 or less	1220	1.0 or less	1220	1.3 or less	940	1.7 or less	720
1.30	1320	1.30	1320	1.50	1120	2.00	700	1.30	940	1.30	940	1.50	810	2.00	600
1.55	1090	1.50	1120	2.00	820	2.50	660	1.55	790	1.50	810	2.00	600	2.50	390
		2.00	820	2.50	670	2.80	580			2.00	600	2.50	390	2.80	330
		2.50	670	3.00	530	3.00	530			2.50	390	3.00	300	3.00	300
		2.69	580	3.50	420	3.50	410			2.69	310	3.50	220	3.50	220
				3.93	370	4.00	330					3.93	180	4.00	180
						4.50	270							4.50	140
						5.17	220							5.17	100

IMPORTANT The Total Rated load chart is based on actual working radius with the bending of boom attributable to load reflected and is shown with the mass of hook (20Kg) included.

SPECIFICATIONS

MODEL		MC-174CRM
Crane capacity		1.72t X 1.0m
Max.working radius		5.17m X 0.22t
Max.lifting height (on the ground)		5.50m
Max.lifting height (underground)		-7.0m (4 falls)
Winch system	Hook speed	10.9m / min (3 layers, 4 falls)
	Hoist wire rope	IWRC 6 X Fi (29) 0/0, ø6 X 35.0m
Telescoping system	Boom length	1.83m ~ 5.45m
Outrigger system	Type	1st stage with flexible stay damper, 2nd stage manual pullout; hydraulic cylinder direct acting type
	Max.extended width	(Lateral) 3,335mm X (Front) 3,060mm X (Rear) 2,885mm
Travel system	Type	Hydraulic motor driven , 2 step speed changer
	Travel speed 1 step/2 step	2.0 / 3.2km/h
	Gradability	20.0 deg
	Crawler ground length x width	1.044mm X 180mm
	Ground pressure	33.7kpa [0.34kgf/cm²]
Engine (diesel)	Model	mitsubishi GB400LE
	Displacement	0.391L [391cc]
	Rated output	6.6kw / 1,800min ⁻¹ [9.0ps / 1,800rpm]
	Starting method	Electric starting
	Fuel/Fuel tank capacity	Gasoline / 6.0L
Remote control system	Type	Cable remote controller
Overall length X width X height		2,000 X 590 X 1,300 mm
Machine weight		1,290Kg
Options		White rubber track, Single fall hook, 2-fall hook

DIMENSIONS



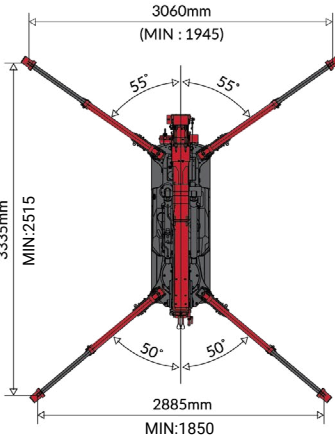
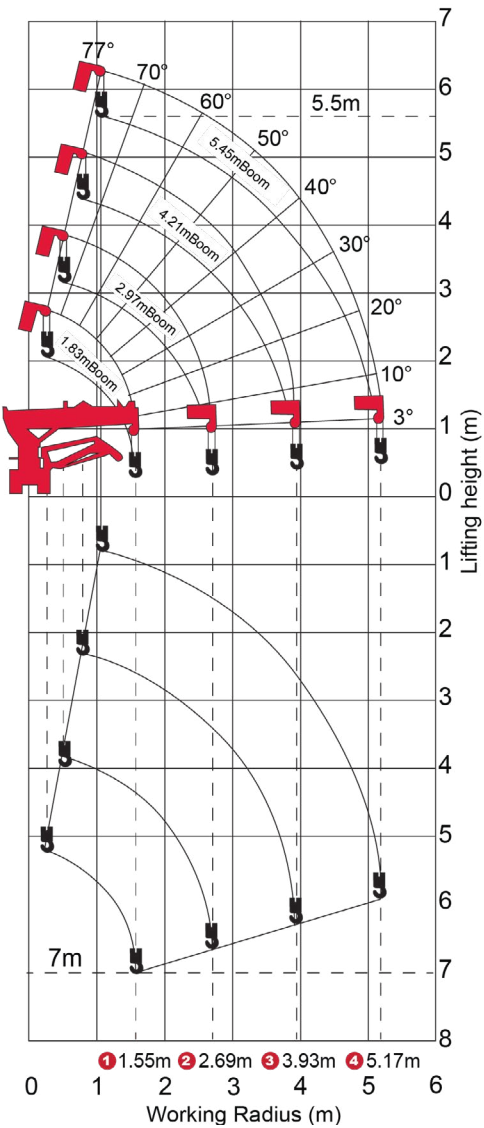
* Due to improvements, the specifications are subject to change without notice.



Our MC 174 will fit into an elevator to access the areas most cranes can't.

WORKING RANGE (4 FALLS)

* Before use, please read the Operation Manual



MC285C-3

MINI CRAWLER CRANE

MAX. LIFTING HEIGHT	8.7m
MAX. WORKING RADIUS	8.205m X 0.15t
CRANE CAPACITY	2.82t X 1.4m

AUXILIARY OPTIONS

AUXILIARY WINCH (OPTION)

Capacity: 900kg
Reach: 100m fall



SEARCHER HOOK

Capacity: 850kg



PADDLE LEVER RADIO
REMOTE CONTROL



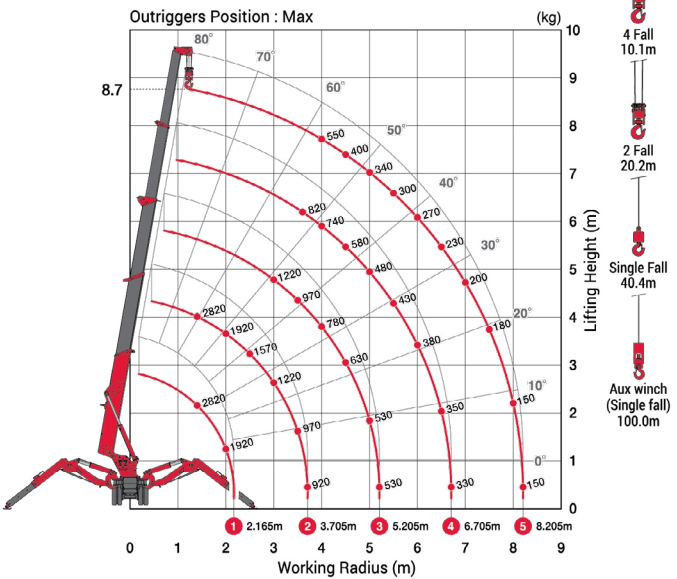
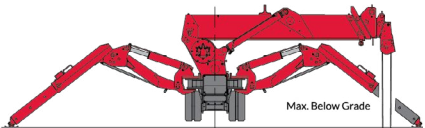
SINGLE FALL HOOK



MASSHIRE

For areas with limited access, our lifting equipment can travel through a standard size door.

MAX. REACH BELOW GROUND



WORKING RANGE CHART (4FALLS)

* Before use, please read the Operation Manual

RATED TOTAL LOAD CHART (4 FALLS)

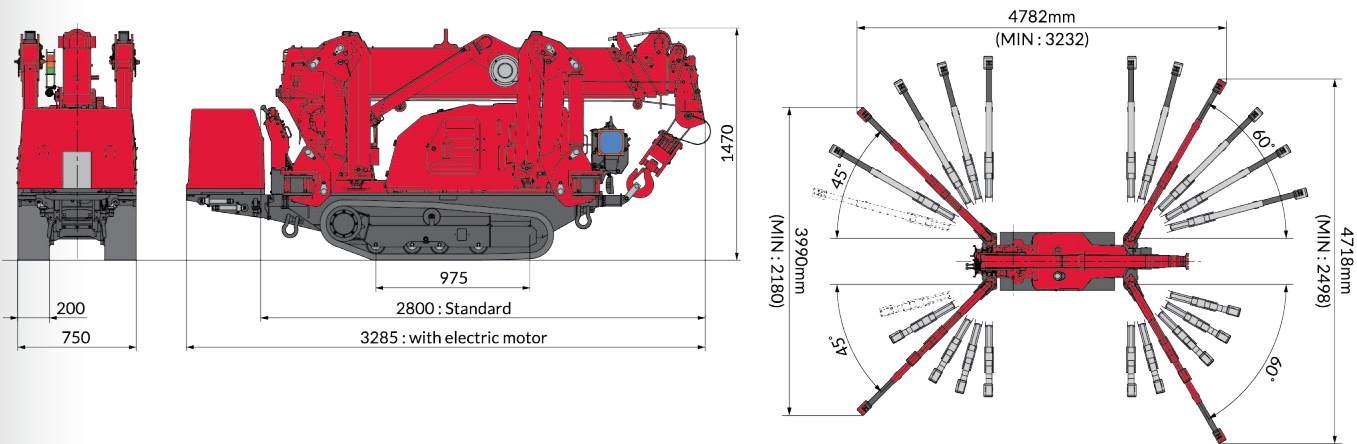
OUTRIGGER EXTENDED TO MAXIMUM								OUTRIGGER EXTENDED TO OTHER THAN MAXIMUM							
2.535m/4.075m Boom		5.575m Boom		7.075m Boom		8.575m Boom		2.535m/4.075m Boom		5.575m Boom		7.075m Boom		8.575m Boom	
Working radius(m)	Rated total load(Kg)	Working radius(m)	Rated total load(Kg)	Working radius(m)	Rated total load(Kg)	Working radius(m)	Rated total load(Kg)	Working radius(m)	Rated total load(Kg)	Working radius(m)	Rated total load(Kg)	Working radius(m)	Rated total load(Kg)	Working radius(m)	Rated total load(Kg)
1.4 or less	2820	3.0 or less	1220	3.6 or less	820	4.0 or less	550	1.5 or less	1720	3.0 or less	510	3.6 or less	400	4.0 or less	330
1.5	2520	3.5	970	4.0	740	4.5	400	2.0	1070	3.5	410	4.0	330	4.5	280
2.0	1920	4.0	780	4.5	580	5.0	340	2.5	630	4.0	330	4.5	280	5.0	230
2.5	1570	4.5	630	5.0	480	5.5	300	3.0	520	4.5	280	5.0	230	5.5	180
3.0	1220	5.0	530	5.5	430	6.0	270	3.5	390	5.0	200	5.5	180	6.0	160
3.5	970	5.205	530	6.0	380	6.5	230	3.705	350	5.205	200	6.0	160	6.5	130
3.705	920			6.5	350	7.0	200					6.5	130	7.0	100
				6.705	330	7.5	180					6.705	120	7.5	80
						8.0	150							8.0	70
						8.205	150							8.205	60

- IMPORTANT**
- The Rated Total Load Chart is based on actual working radius including boom deflection.
 - The weight of hook block (standard 4 fall / 2 fall-30kg) must be included as part of the load shown in the Rated Total Load Chart.
 - When using two falls hook or single fall hook use the appropriate four falls Rated Total Load Chart shown above but with a maximum load of: -1410kg for two falls and -710kg for Single fall.

SPECIFICATIONS

MODEL		MC285 - 3
Crane capacity		2.82t X 1.4m
Max.working radius		8.205m X 0.15t
Max.lifting height (on the ground)		8.7m
Max.lifting height (underground)		-10.1m (4falls)
Max.lifting height (underground) (optional auxiliary winch)		-100m (single fall)
Winch system	Hook speed	9.3m/min (4 layers, 4 falls)
	Hoist wire rope	IWRC 6 X Fi (29) 0/0, ø7X48.0m
Telescoping system	Boom length	2.535m - 8.575m
Outrigger system	Max.extended width (between outside of OR adaptors)	(Lateral) 4,782mm X (Front) 4,718mm X (Rear) 3,990mm
Travel system	Type	Hydraulic motor driven, stepless speed changer
	Travel speed	0 - 2.2km/h
	Gradability	20deg
	Crawler ground length X width	975mm X 200mm
	Ground pressure (MC285CWM-3)	50.0kpa (0.510kgf/cm²)
	Ground pressure (MC285CWME-3)	54.3kpa (0.554kgf/cm²)
Engine (diesel)	Model	YANMAR 2TNV70-NMBA
	Displacement	569cc (0.569L)
	Rated output	7.4kw (10.1 PS) / 2,500rpm
	Starting method	Electric starting
	Fuel/Fuel tank capacity	Diesel / 12.0L
Motor (MC285CWME-3)	Motor Model	IKKH-FBK8G-4P-5.5kw
	Motor type	Totally enclosed fan-cooled motor 5.5kw, 4P 380V
	Starting system	Inverter system (30Hz-60Hz)
Remote control system	Type	Radio & paddle type control
Overall length X width X height (MC285CWM-3)		2,800mm X 750mm X 1,470mm
Overall length x width X height (MC285CWME-3)		3,285mm x 750mm X 1,470mm (Detachable E-motor)
Machine weight (MC285CWM-3)		1,990kg (2,160 with Aux winch)
Options		White rubber tracks, Single fall hook, 850kg searcher hook, 900kg auxiliary winch

DIMENSIONS



* Due to improvements, the specifications are subject to change without notice.

MC-305C

MINI CRAWLER CRANE

MAX. LIFTING HEIGHT	12.52m
MAX. WORKING RADIUS	12.16m X 0.26t
CRANE CAPACITY	2.98t X 2.5m



► AUXILIARY OPTIONS

SEARCHER HOOK

Capacity: 850kg



PADDLE LEVER RADIO REMOTE CONTROL



SINGLE FALL HOOK



► **RATED TOTAL LOAD CHART (4 FALLS)**

OUTRIGGER EXTENDED TO MAXIMUM

3.695m /5.945m Boom		8.145m Boom		10.315m Boom		12.485m Boom	
Working radius(m)	Rated total load(Kg)	Working radius(m)	Rated total load(Kg)	Working radius(m)	Rated total load(Kg)	Working radius(m)	Rated total load(Kg)
2.5 or less	2980	2.7	2270	4.0	1080	4.5 or less	790
3.0	2390	3.0	2120	4.5	985	5.0	660
3.5	1990	3.5	1680	5.0	880	6.0	520
4.0	1710	4.0	1440	6.0	770	7.0	430
4.5	1490	4.5	1260	7.0	670	8.0	380
5.0	1340	5.0	1110	8.0	570	9.0	340
5.62	1160	5.5	990	9.0	500	10.0	310
		6.0	880	9.99	435	11.0	280
		7.0	730			12.16	260
		7.82	630				

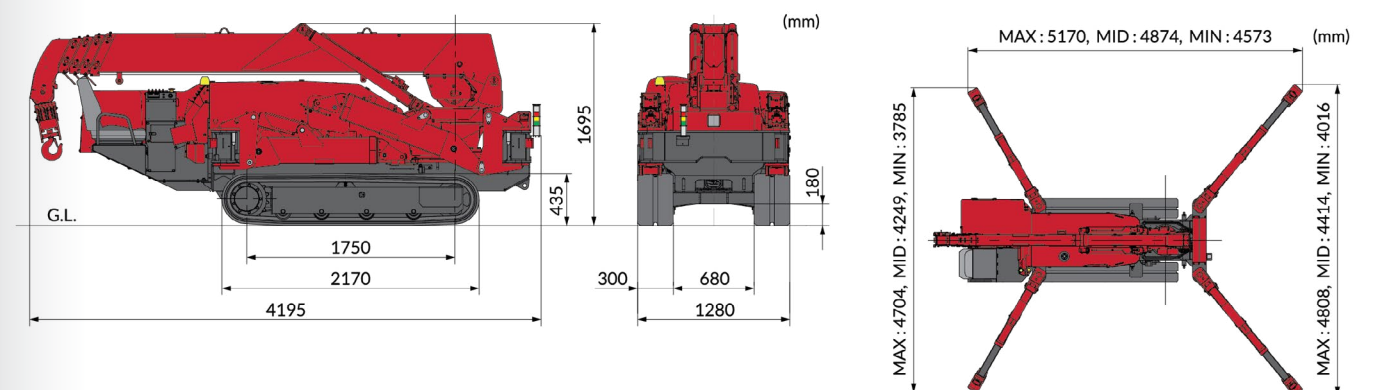
! IMPORTANT

- The Rated Total Load Chart is based on actual working radius with the bending of boom attributable to load reflected and is shown with the mass of hook (30kg) included.

► SPECIFICATIONS

MODEL		MC305CRM(E)-3
Crane capacity		2.98t X 2.5m
Max.working radius		12.16m X 0.26t
Max.lifting height (on the ground)		12.52m
Max.lifting height (underground)		-16.09m
Winch system	Hook speed	13.5m/min (4layers, 4 falls)
	Hoist wire rope	IWRC 6 X WS(26) ø8 X 73m
Telescoping system	Boom length	3.695 ~ 12.485m
Outrigger system	Max.extended width (outer dims)	(Lateral) 5,170mm X (Front) 4,808mm X (Rear) 4,704mm
Travel system	Type	Hydraulic motor driven, stepless speed changer
	Travel speed	0 ~ 2.8km/h
	Gradability	23 deg
	Crawler ground length X width	1750mm x 300mm
	Ground pressure	36.3kpa [0.37Kgf/cm²] (38.0kpa [0.39kgf/cm²] with electric motor)
Engine	Model	YANMAR 3TNV80F-SNMB
	Displacement	1.266L [1,266cc]
	Rated output	15.2kw /2500min ⁻¹ [20.7PS /2500rpm]
	Starting method	Electric starting
	Fuel/Fuel tank capacity	Diesel / 40.0L
Remote control system	Type	Cable remote controller
Overall length x width x height		4,195mm x 1,280mm x 1,695mm
Machine weight		3,900kg (4,080kg with electric motor)
Options		White rubber track, Single fall hook, Protection roll bar, Searcher hooks.

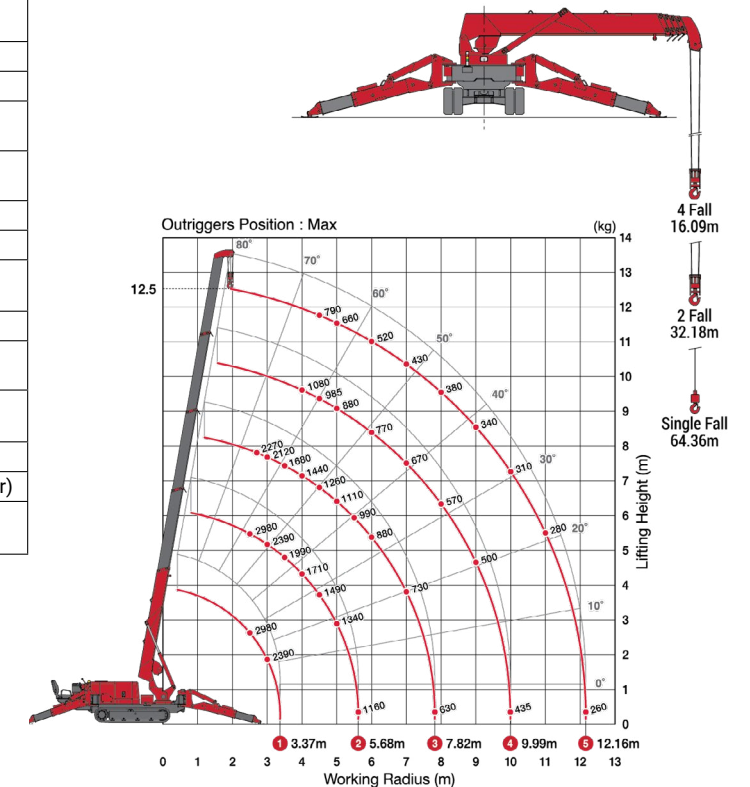
► DIMENSIONS



* Due to improvements, the specifications are subject to change without notice.

The adaptability of our MC 305 mini cranes allow you to work in different types of environments.

MAX. REACH BELOW GROUND ◀



WORKING RANGE CHART (4FALLS) ◀

* Before use, please read the Operation Manual

MC-405C

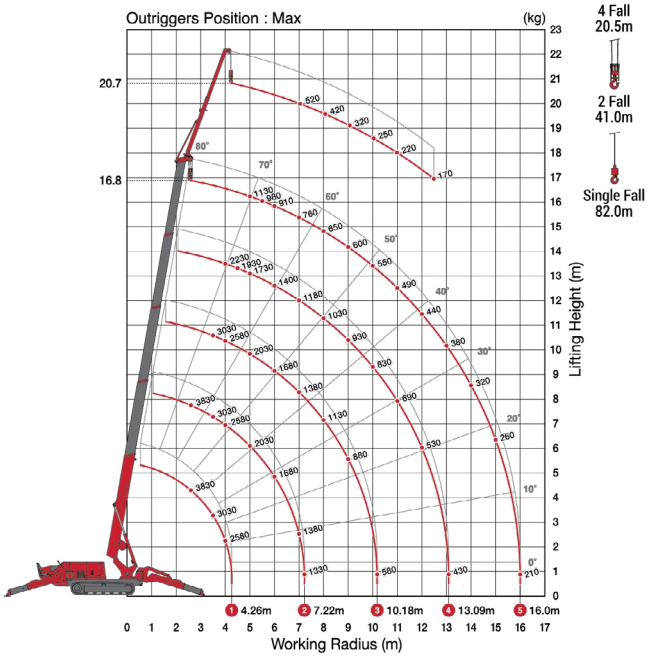
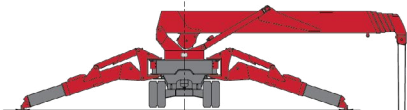
MINI CRAWLER CRANE

MAX. LIFTING HEIGHT	16.8m
MAX. WORKING RADIUS	16m X 0.21t
CRANE CAPACITY	3.83t X 2.7m



We work with you to provide a tailored fleet that suits the needs of your project.

MAX. REACH BELOW GROUND



WORKING RANGE CHART (4FALLS)

* Before use, please read the Operation Manual

SPECIFICATIONS

MODEL		MC-405CRM(E)
Crane capacity		3.83t X 2.7m
Max.working radius		16m X 0.21t
Max.lifting height (on the ground)		16.8m (20.7m with fly jib)
Max.lifting height (underground)		-20.5m (4 falls)
Winch system	Hook speed	12.0m/min [18.0m/min] (4 layers 4 falls)
	Hoist wire rope	IWRC 6 X WS(26) ø8 X 92m
Telescoping system	Boom length	4.735~16.475m
Outrigger system	Type	Extended Hydraulic cylinder direct acting Setting up Hydraulic cylinder direct acting
	Max. extended width (outer dims)	(Lateral) 6,076mm X (Front) 5,441mm X (Rear) 5,829mm
Travel system	Type	Hydraulic motor driven, stepless speed changer
	Travel speed	0~2.9km /h
	Gradability	20deg
	Crawler ground length X width	1,720 X 320mm
	Ground pressure	49.0kpa [0.50kgf/cm²]
Engine	Model	YANMAR 3TNV88F-EPMB
	Displacement	1.642L [1,642cc]
	Rated output	17.5kw / 2,400min ⁻¹ [23.8PS / 2,400rpm]
	Starting method	Electric starting
	Fuel/Fuel tank capacity	Diesel / 60.0L
Remote control system	Type	Cable remote controller
Overall length X width X height		4,980 X 1,380 X 1,980 mm
Machine weight		5,600kg (5,750kg with electric motor)
Options		White rubber track, Single fall hook, Protection roll bar, Searcher hooks, Fly jib

AUXILIARY OPTIONS

SEARCHER HOOK

Capacity: kg



FLY JIB

Capacity: 520kg



SINGLE FALL HOOK



RATED TOTAL LOAD CHART (4 FALLS)

OUTRIGGER EXTENDED TO MAXIMUM

4.735m / 7.695m Boom		10.655m Boom		13.565m Boom		16.475m Boom	
Working radius(m)	Rated total load(Kg)	Working radius(m)	Rated total load(Kg)	Working radius(m)	Rated total load(Kg)	Working radius(m)	Rated total load(Kg)
2.7 or less	3830	3.5	3030	4.0	2230	5.0	1130
3.5	3030	4.0	2580	4.5	1930	5.5	980
4.0	2580	5.0	2030	5.0	1730	6.0	910
5.0	2030	6.0	1680	6.0	1400	7.0	760
6.0	1680	7.0	1380	7.0	1180	8.0	650
7.0	1380	8.0	1130	8.0	1030	9.0	600
7.25	1330	9.0	880	9.0	930	10.0	550
		10.2	580	10.0	830	11.0	490
				11.0	690	12.0	440
				12.0	530	13.0	380
				13.1	430	14.0	320
						15.0	260
						16.0	210

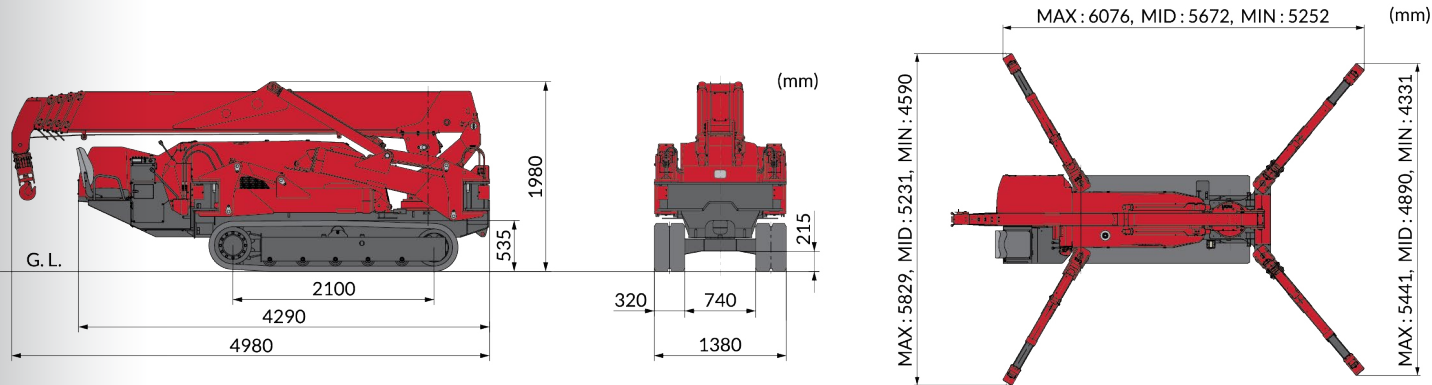
FLY JIB RATED TOTAL LOAD CHART (OPTIONAL)

Boom angle (deg)	Jib length: 4.5m (kg)
76	520
72	520
69	420
66	320
63	250
60	220
55	170

IMPORTANT

- The Total Rated Load Chart is based on actual working radius with the bending of boom attributable to load reflected and is shown with the mass of hook (50Kg) included.

DIMENSIONS



* Due to improvements, the specifications are subject to change without notice.

LC-785

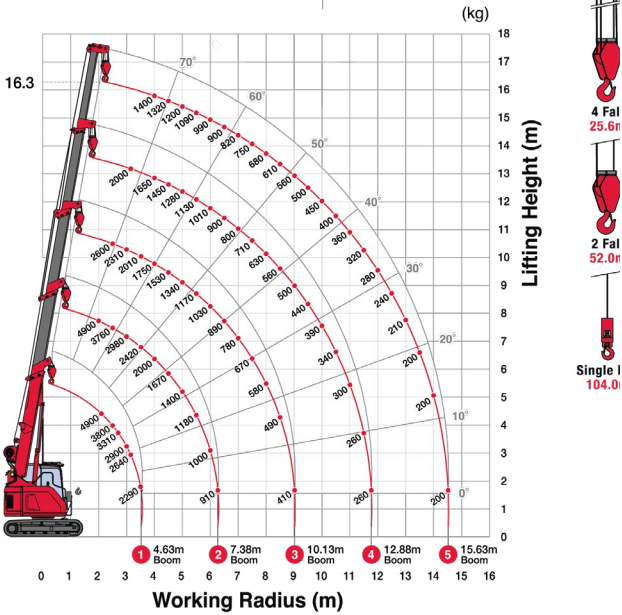
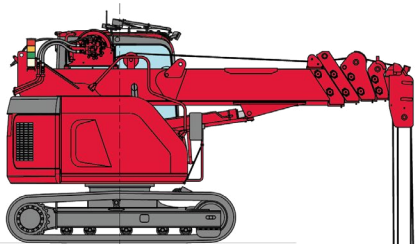
MINI CRAWLER CRANE

MAX. LIFTING HEIGHT	16.35m X 1400kg
MAX. WORKING RADIUS	14.52m X 200kg
CRANE CAPACITY	4.9t X 2.1m



Our LC 785 mini crane is equipped with industry leading reach for a crane in its class.

MAX. REACH BELOW GROUND ◀



WORKING RANGE CHART (4FALLS) ◀

* Before use, please read the Operation Manual

► SPECIFICATIONS

MODEL		LC-785
Crane capacity		4.9t X 2.1m
Max.working radius		14.52m X 200kg
Max.lifting height		16.35m 1400kg
Rope length		
Winch system	Hook speed	Two speed 29/43m / min (4 falls, 4th layer)
	Hoist wire rope	IWRC 6 X Fi (29) Ø 10mm X 115m
Telescoping system	Boom length	4.63m - 15.63m
	Telescoping speed	11m / 25 sec.
	Boom type	Fully automatic 5 section pentagonal telescopic boom
Travel system	Low	0 - 2.5km/h
	High	0 - 4.5km/h
	Gradability	20°
	Ground length X width	2235mm X 450mm (Track dimensions)
	Ground pressure	0.51 kgf / cm²
Engine	Model	Komatsu SAA4D95LE-5
	Rated output	41.0kW / 1950 rpm
	Starting method	Electric
	Fuel/Fuel tank capacity	Diesel / 140L
Overall length X width X height		5020mm X 2360mm X 2795mm
Machine weight		10250kg

► AUXILIARY OPTIONS

SINGLE FALL HOOK



► RATED TOTAL LOAD CHART (4 FALLS)

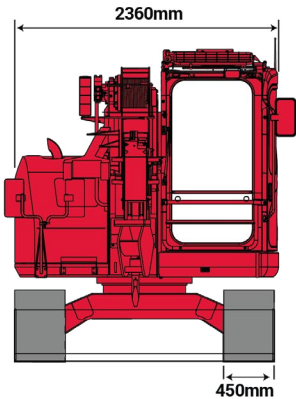
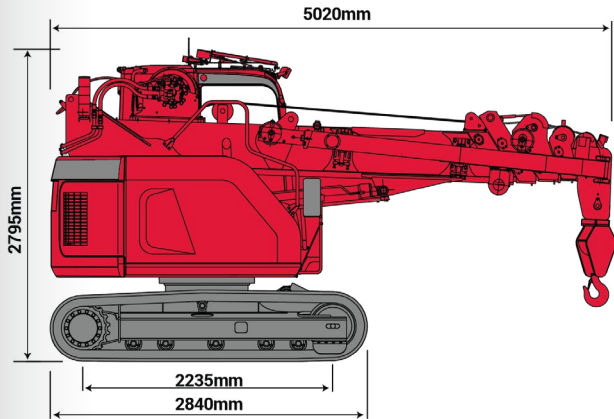
OUTRIGGER EXTENDED TO MAXIMUM

4.63m Boom		7.38m Boom		10.13m Boom		12.88m Boom		15.63m Boom	
Working radius(m)	Rated total load(Kg)	Working radius(m)	Rated total load(Kg)	Working radius(m)	Rated total load(Kg)	Working radius(m)	Rated total load(Kg)	Working radius(m)	Rated total load(Kg)
2	4,900	2	4900	2	2600	2	2000	2	N/A
2.5	3,800	2.5	3760	2.5	2600	2.5	2000	2.5	1400
3	2,900	3	2980	3	2310	3	2000	3	1400
3.5	2,290	3.5	2420	3.5	2010	3.5	1890	3.5	1400
		4	2000	4	1750	4	1650	4	1400
		4.5	1670	4.5	1530	4.5	1450	4.5	1320
		5	1400	5	1340	5	1280	5	1200
		6	1000	6	1030	6	1010	6	990
				7	780	7	800	7	820
				8	580	8	630	8	680
				9	410	9	500	9	560
						10	390	10	450
						11	300	11	360
								12	280
								13	210
								14	200
								14.52	200

⚠ IMPORTANT

- The Total Rated Load Charts are based on the actual working radius including boom deflection. The weight of the hook (standard 4 fall - 90kg) must be included as part of the load shown in the Total Rated Load Charts.
- When using two fall or single fall hooks, use the appropriate four fall Total Rated Load Chart but with a maximum load of: Two Fall - 2450kg, Single Fall - 1220kg.

► DIMENSIONS



* Due to improvements, the specifications are subject to change without notice.

SOLUTIONS

At Mass Hire, we are committed to offering versatile lifting solutions for your project.

- ▶ Telephone
0401 707 444
- ▶ Mail
info@massgroup.com.au



HOW WE HELP ◀

Mass Hire offers comprehensive, tailored solutions when it comes to hiring lifting technology for projects of all sizes.

We guide each client towards the right fleet for their particular needs. With a focus on exceptional customer service, we take pride in our ability to offer unparalleled solutions unlike any other.

Find out more:
www.masshire.com.au



CRANE HIRE

Due to the use of innovative crane technology, we are able to perform any heavy lifting task by promising safe lifting and precise movement, even if the components are heavy and located in areas of limited access.



CRANE CREW

We have a responsible and professional work team, who are experienced in using mechanical tools, operating machines, and maintaining equipment.

Our highly experienced team works on structural assemblies and dismantles in different industries providing more accurate load calculations and modern fleet of cranes.



PROJECT MANAGMENT

We work with our clients in the administration of complex projects, increasing productivity in infrastructure construction and lifting of heavy loads.

We elevate
proficiency to empower
the Australian
construction industry

MASSPARK

We provide truly innovative and efficient mechanical **car parking systems** that not only stand the test of time, but perfectly meet your specific project needs.

MASSLIFT

Dedicated to delivering innovative mechanical excellence, Mass Lift is proud to be a respected name in the **Australian elevators** market.

MASSMECH

Mass Mech offers expert, end-to-end maintenance solutions for all **your vertical transport** needs.

▼
CONTACT

www.masshire.com.au

info@massgroup.com.au

3A Leo Court Derrimut
Melbourne, Australia, 3026

0401 707 444



Whether you're looking for reliable **mini-crane hire** for an upcoming project or simply have a few questions about how we can help you, our friendly team are always happy to chat.

Contact us today to learn more about Mass Hire and our range of services.

 **MASSPARK**

 **MASSLIFT**

 **MASSMECH**

 **MASSHIRE**